



HSP10 Polyclonal Antibody

Catalog No	YP-Ab-03919
Isotype	IgG
Reactivity	Human;Mouse;Rat
Applications	WB;IHC;IF;ELISA
Gene Name	HSPE1
Protein Name	10 kDa heat shock protein mitochondrial
Immunogen	The antiserum was produced against synthesized peptide derived from human HSP10. AA range:51-100
Specificity	HSP10 Polyclonal Antibody detects endogenous levels of HSP10 protein.
Formulation	Liquid in PBS containing 50% glycerol, 0.5% BSA and 0.02% sodium azide.
Source	Polyclonal, Rabbit,IgG
Purification	The antibody was affinity-purified from rabbit antiserum by affinity-chromatography using epitope-specific immunogen.
Dilution	Western Blot: 1/500 - 1/2000. Immunohistochemistry: 1/100 - 1/300. Immunofluorescence: 1/200 - 1/1000. ELISA: 1/10000. Not yet tested in other applications.
Concentration	1 mg/ml
Purity	≥90%
Storage Stability	-20°C/1 year
Synonyms	HSPE1; 10 kDa heat shock protein; mitochondrial; Hsp10; 10 kDa chaperonin; Chaperonin 10; CPN10; Early-pregnancy factor; EPF
Observed Band	10kD
Cell Pathway	Mitochondrion matrix.
Tissue Specificity	B-cell lymphoma,Uterus,
Function	function:Eukaryotic CPN10 homolog which is essential for mitochondrial protein biogenesis, together with CPN60. Binds to CPN60 in the presence of Mg-ATP and suppresses the ATPase activity of the latter.,induction:By stress.,mass spectrometry: PubMed:7912672,similarity:Belongs to the groES chaperonin family.,subunit:Homohexamer.,
Background	This gene encodes a major heat shock protein which functions as a chaperonin. Its structure consists of a heptameric ring which binds to another heat shock protein in order to form a symmetric, functional heterodimer which enhances protein folding in an ATP-dependent manner. This gene and its co-chaperonin, HSPD1, are arranged in a head-to-head orientation on chromosome 2. Naturally occurring read-through transcription occurs between this locus and the neighboring locus MOBKL3.[provided by RefSeq, Feb 2011],



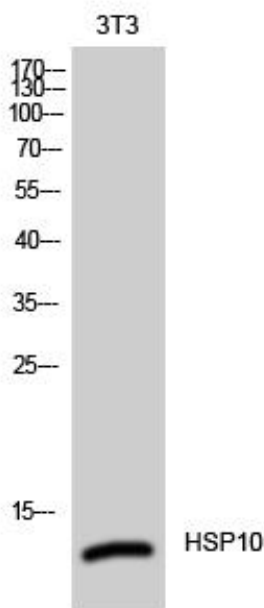
matters needing attention

Avoid repeated freezing and thawing!

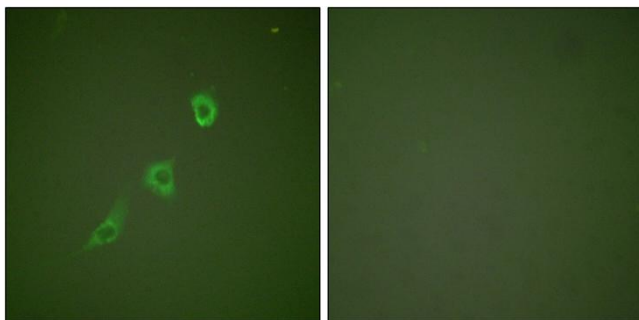
Usage suggestions

This product can be used in immunological reaction related experiments. For more information, please consult technical personnel.

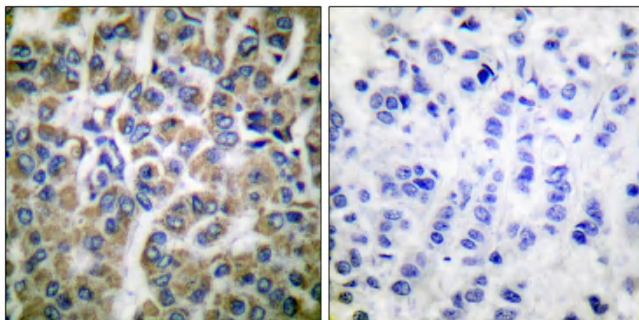
Products Images



Western Blot analysis of 3T3 cells using HSP10 Polyclonal Antibody



Immunofluorescence analysis of NIH/3T3 cells, using HSP10 Antibody. The picture on the right is blocked with the synthesized peptide.



Immunohistochemistry analysis of paraffin-embedded human breast carcinoma tissue, using HSP10 Antibody. The picture on the right is blocked with the synthesized peptide.



Western blot analysis of lysates from NIH/3T3 cells, using HSP10 Antibody. The lane on the right is blocked with the synthesized peptide.

